

Split Core Current Transformer OBM S36 Series

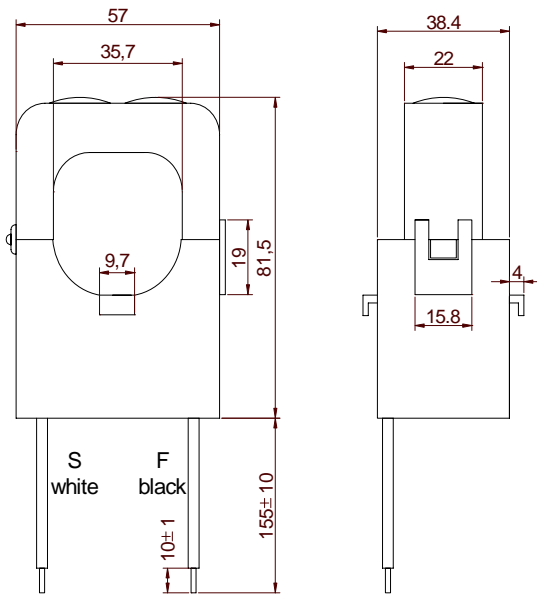
The S36 Series are split-core current transformers. The CT can be mounted to existing panels, such as control centers or load centers, to measure or monitor wattage. These CTs can be mounted without removing existing cables for easier installation



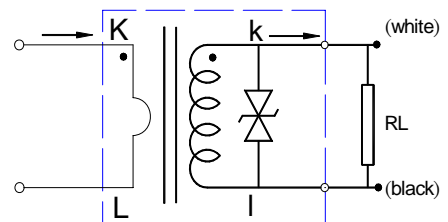
STANDARD PART NUMBERS

MODEL	INPUT CURRENT	AVAILABLE OUTPUT
S36-200	200 A	CURRENT OUTPUTS @ 20mA, 33.3mA, 40mA, 50mA, 100mA, 1A, 5A VOLTAGE OUTPUTS @ 0.25V, 0.33V, 0.5V, 1V, 2V
S36-300	300 A	
S36-400	400 A	
S36-500	500 A	
S36-600	600 A	

DIMENSIONS(MM)



CONNECTION DIAGRAM



note:

1. Primary current direction from K to L
2. Secondary current directions from k to l (lead wire from white to black)
3. RL: Output load resistance

APPLICATION

- Current Measurement
- Electrical load monitoring
- Energy and sub-metering products
- Network equipment
- Instruments and sensors
- Control systems
- Go GREEN initiatives

SPECIFICATIONS

- Standard Input Current 5-600A
- Frequency 50Hz — 400Hz
- Custom design Turns-Ratio available
- Standard accuracy 0.5
- Approximate weight 350g
- Clamping voltage on selected models
- ANSI C57.13 and C12.20 Standards

CAUTION

Before installation, safety precautions must be followed by licensed professional. Never energize primary unless short circuited terminals or burden connected to secondary.