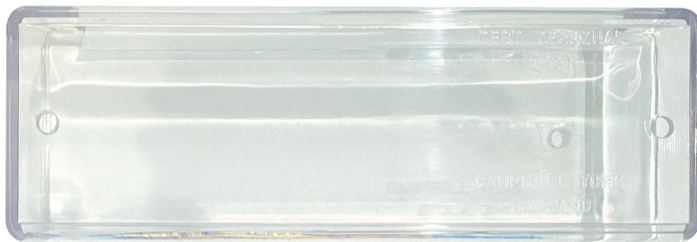


22983

Front Connected Test Terminal Block  
with Clear Polycarbonate Cover



VIEW & BUY  
ONLINE



## 22983

Front Connected Test  
Terminal Block with Clear  
Polycarbonate Cover

# DATASHEET

1 Product Overview

2 Specifications

3 Technical Support

## 1 PRODUCT OVERVIEW

**Installation of a test terminal block allows for safe testing, disconnection of the equipment - leaving CT's securely short-circuited.**

- Reduces possibility of damage to current transformers.
- Used for testing a wide range of electrical equipment. Including integrating meters and protective relays, without disturbing the normal load circuit.



## 2 SPECIFICATIONS

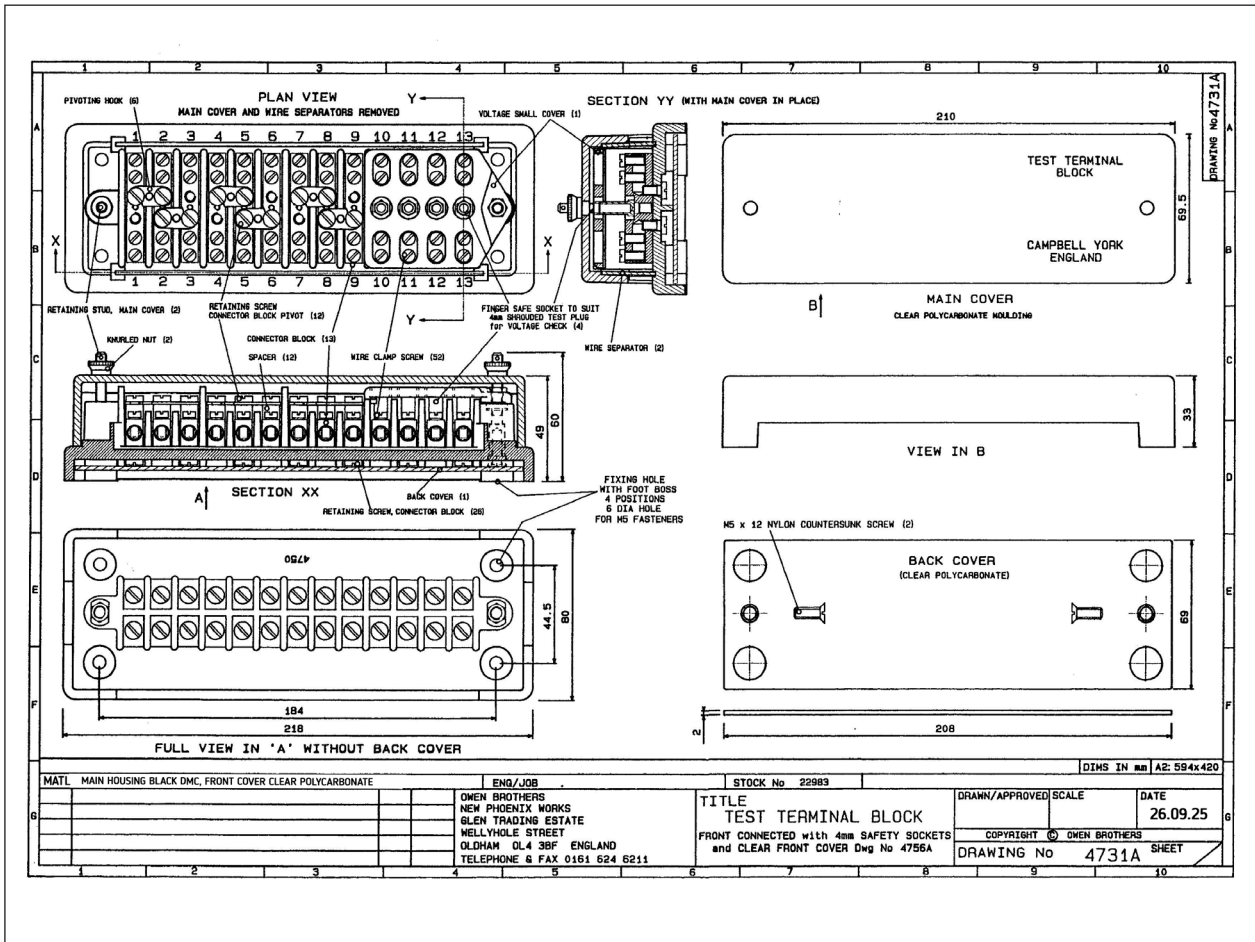
<b>Maximum current on non-socket terminals:</b>	74A with 16mm <sup>2</sup> stranded cable @ 50C 55A with 10mm <sup>2</sup> stranded cable @ 50C
<b>Maximum current on socket terminals:</b>	40A @ 50C
<b>Current rating of 4mm insulated sockets:</b>	10A
<b>Working voltage:</b>	415V AC
<b>Flash test voltage:</b>	2.5kV AC
<b>Number on 4mm insulated sockets:</b>	4
<b>Disposition of 4mm insulated sockets:</b>	On terminals 10 to 13
<b>Number of current terminals per block:</b>	9
<b>Number of neutral terminals per block:</b>	1
<b>Number of voltage terminals per block:</b>	3
<b>Number of pivoted shorting links per block:</b>	6
<b>Number of links per current phase:</b>	2
<b>Current terminal hole diameter:</b>	6mm
<b>Voltage terminal hole diameter:</b>	6mm
<b>Number of pinch screws per hole:</b>	2 (4 per block)
<b>Pinch screws:</b>	2BA
<b>Cover retaining screw and knurled nut:</b>	M5
<b>Cover and base mouldings material:</b>	DMC, Black
<b>Other plastic parts:</b>	Glass reinforced nylon, flame retardant, black
<b>Terminals and links:</b>	Brass, bright nickel plated
<b>Mounting holes with moulded feet:</b>	Four at 5mm diameter
<b>Weight:</b>	About 1kg
<b>Panel cut-out size for back connected:</b>	171 x 39
<b>Mounting holes for front and back connected:</b>	184 x 45 centres
<b>Mounting hole:</b>	4 holes each 6mm diameter
<b>CTI of DMC:</b>	575<1
<b>Dielectric strength:</b>	4kV

## 2 SPECIFICATIONS (Continued)

- 4mm sockets fitted as standard.
- Overall size: Overall size: 218l x 80w x 60d mm

### The test terminal block fully complies with:

BS EN IEC 60112:2020, BS EN 60664-1:2007 and BS EN IEC 60947-1:2021



## 3 TECHNICAL SUPPORT

### Technical Support/Sales:

**Tel:** +00 44 1616246211

**Email:** SUPPORT: [support@owen-brothers.com](mailto:support@owen-brothers.com)  
SALES: [sales@owen-brothers.com](mailto:sales@owen-brothers.com)

[www.owen-brothers.com](http://www.owen-brothers.com)

