

Tel & Fax
++ 44 (0)161
624 6211

OWEN BROTHERS

New Phoenix Works
Glen Trading Estate
Wellyhole Street Oldham
OL4 3BF England

TEST TERMINAL BLOCK (TTB) Back Connected

Stock Number 22984.
Drawing number 4735

Shows main cover removed & cover for 4mm sockets removed.
Back of TTB shows 13 threaded studs for M6 electrical connection.
4 long studs for 3 voltages and 1 neutral, 9 studs for current connection.
Overall size:
218 length x 80 wide x 60mm deep.

This test terminal block fully complies with BS EN 60947-7-1:2002, "Low Voltage switchgear and controlgear, Part 7-1: Ancillary equipment — Terminal Blocks for copper conductors"
Working Voltage 415v AC DC.
Rated insulation voltage 2.5kV.
Rated impulse withstand voltage 6kV.
Rated cross section 16mm²
Rated connecting capacity (mm²) 6, 10, 16
Rated current 74A with 16mm² stranded cable, and 55A with 10sqmm stranded cable.

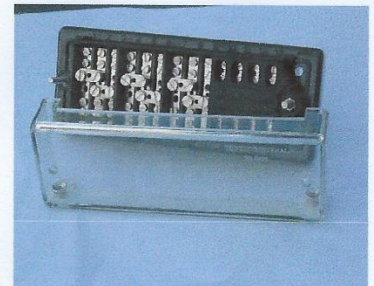
4 rear Mounting Feet supports with 6 diameter holes.



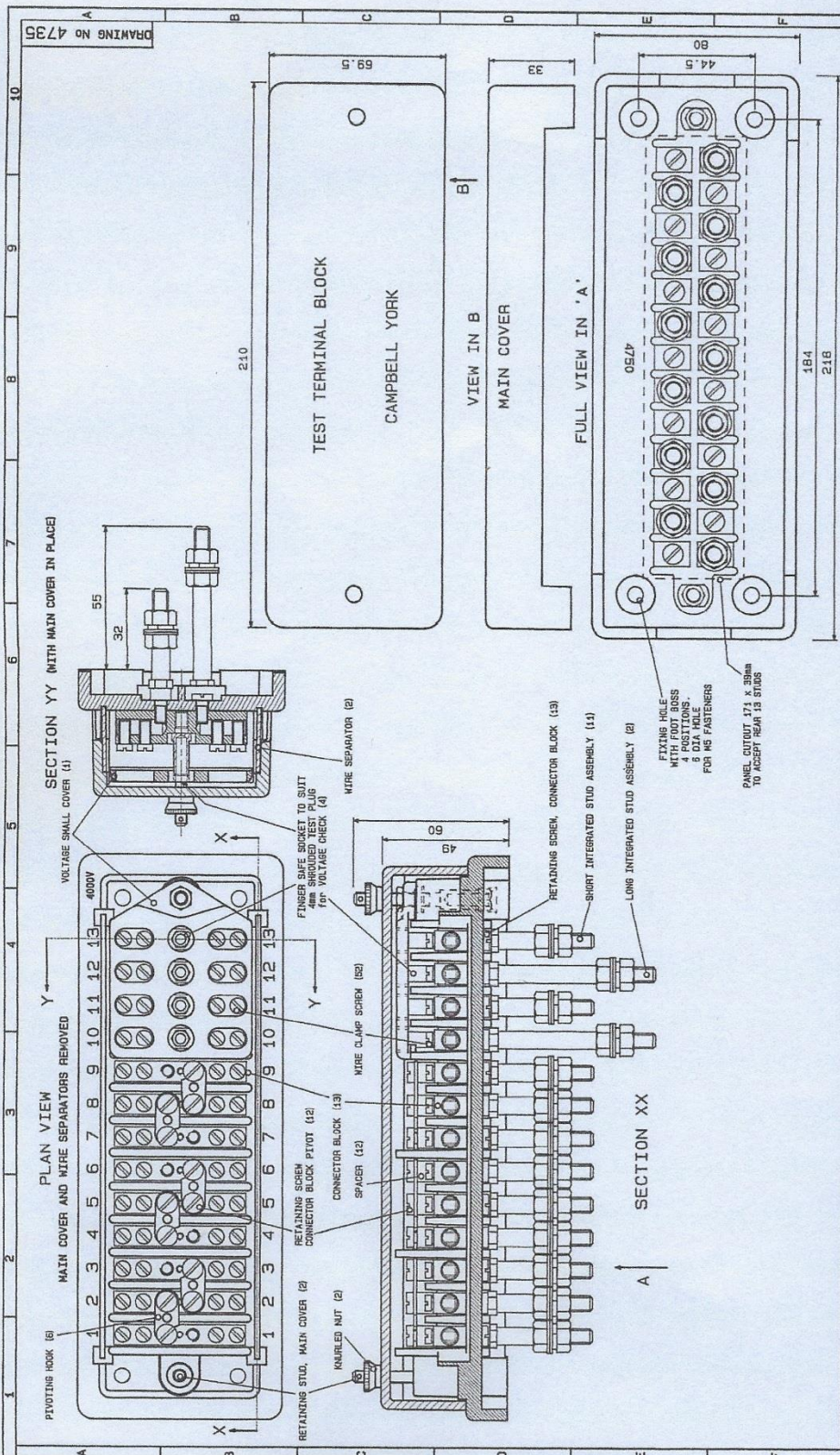
A Rear Safety Cover and Insulation Shrouds give full protection against operator contact: see separate sheet.

Four of 4mm Safety sockets for use with single pole 4mm plugs with fixed or retractable shrouds.

Cover for 4mm sockets shown fitted supplied as standard.

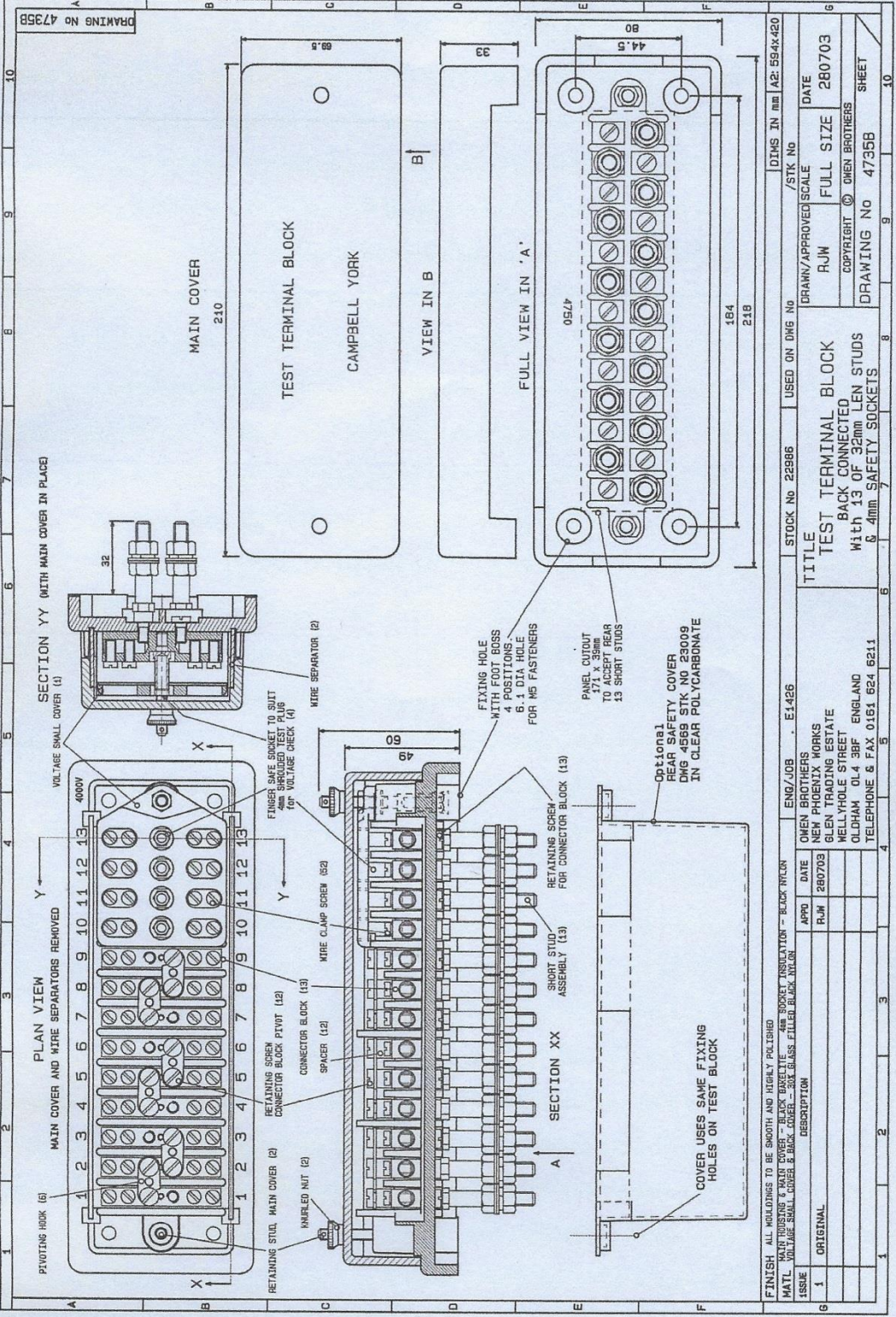


This back connected Test Terminal Block is available with a clear front cover moulded in polycarbonate. Its stock number is 22985 and drawing number 4735A. The write-on label is not supplied. All other features remain the same.



DRAWING No 4735

| | | | | | | | | | |
|--|--|-------------------------------|--|----------------------|--|---------------------------|--|--------------------------|--|
| FINISH ALL HOLDINGS TO BE SMOOTH AND HIGHLY POLISHED | | ENG/JOB | | STOCK NO 22984 | | USED ON Dwg No | | DIM IN mm 1/2: 59.4x42.0 | |
| MATERIAL: MAIN COVER - BLACK POLISHED ALUMINIUM; SMALL COVER - BLACK POLISHED ALUMINIUM; NUTS - BLACK NICKEL | | NEW PHOENIX WORKS | | DRAWN/APPROVED SCALE | | RJV FULL | | DATE | |
| DESCRIPTION | | GLEN TRADING ESTATE | | RJV | | COPYRIGHT © OWEN BROTHERS | | 290499 | |
| 1 ORIGINAL | | WELLYHOLE STREET | | RJV | | DRAWING NO | | 4735 | |
| 2 WIRE CLAMP & CONNECTOR BLOCK RETAINING SCREW CTB'S REVISED | | DILPHAM OL 4 3RF ENGLAND | | RJV | | SHEET | | 10 | |
| 3 FIXING HOLE DETAILS AND PANEL CUT ADDED | | TELEPHONE & FAX 0161 624 6211 | | RJV | | BACK CONNECTED | | 9 | |
| TITLE | | TEST TERMINAL BLOCK | | STOCK NO 22984 | | USED ON Dwg No | | DIM IN mm 1/2: 59.4x42.0 | |
| TEST TERMINAL BLOCK | | NEW PHOENIX WORKS | | DRAWN/APPROVED SCALE | | RJV FULL | | DATE | |
| With 4mm SAFETY SOCKETS | | GLEN TRADING ESTATE | | RJV | | COPYRIGHT © OWEN BROTHERS | | 290499 | |
| BACK CONNECTED | | WELLYHOLE STREET | | RJV | | DRAWING NO | | 4735 | |
| | | DILPHAM OL 4 3RF ENGLAND | | RJV | | SHEET | | 10 | |
| | | TELEPHONE & FAX 0161 624 6211 | | RJV | | BACK CONNECTED | | 9 | |



DRAWING No 4735B

10 9 8 7 6 5 4 3 2 1

| | | | | | | | |
|-------------------------------|--|----------------|--|---------------------------|--|-------------|--|
| STOCK No 22986 | | USED ON DWG No | | DIMS IN mm | | /STK No | |
| E1426 | | E1426 | | 142 | | 594x420 | |
| TITLE | | | | DRAWN/APPROVED | | SCALE | |
| TEST TERMINAL BLOCK | | | | RJW | | FULL SIZE | |
| BACK CONNECTED | | | | COPYRIGHT © OMEN BROTHERS | | DATE | |
| With 13 OF 32mm LEN STUDS | | | | DRAWING No 4735B | | SHEET | |
| With 4mm SAFETY SOCKETS | | | | 280703 | | 10 | |
| ENG/JOB | | DATE | | APPRO | | DESCRIPTION | |
| OMEN BROTHERS | | 280703 | | RJW | | ORIGINAL | |
| NEW PHOENIX WORKS | | | | | | | |
| GLEN TRADING ESTATE | | | | | | | |
| WELLHOLE STREET | | | | | | | |
| OLDHAM OL4 3BF | | | | | | | |
| ENGLAND | | | | | | | |
| TELEPHONE & FAX 0161 624 6211 | | | | | | | |