

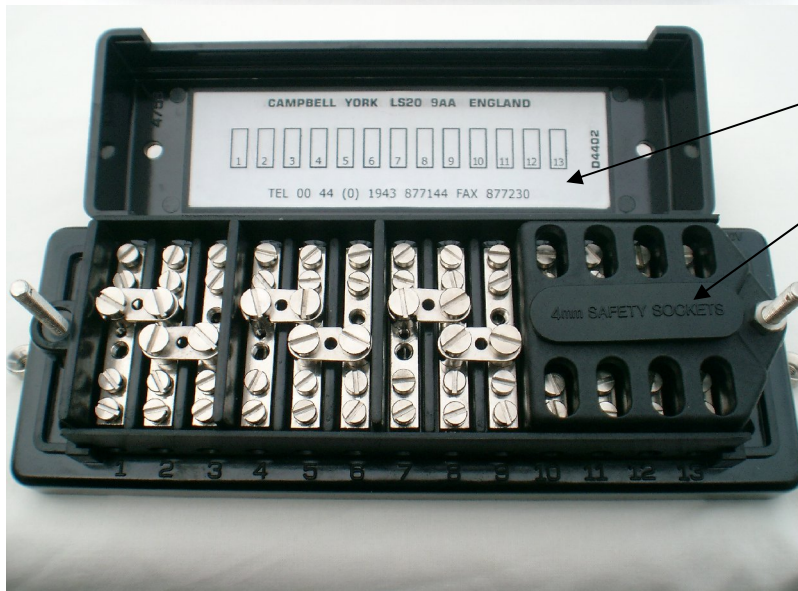
4 rear Mounting
Feet supports.
6 dia holes.



TEST TERMINAL BLOCK (TTB)
Front Connected
Stock Number 22988.
Drawing number 4731.

Shows main Cover removed &
Cover for 4mm sockets removed.
Back of TTB has clear removable
polycarbonate cover fully
insulating the rear.

Overall size:
218 len x 80 wide x 60mm deep.

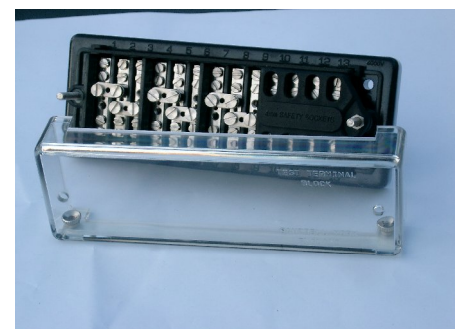
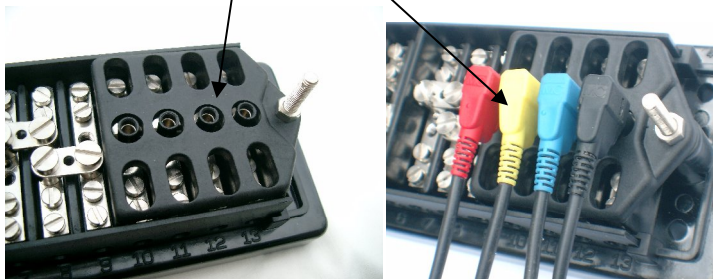


Shows inside of main Cover with
write-on label.

Cover for 4mm sockets shown
fitted supplied as standard.

This test terminal block fully complies
with BS EN 60947-7-1:2002,
“Low Voltage switchgear and controlgear,
Part 7-1: Ancillary equipment —
Terminal Blocks for copper conductors”
Working Voltage 415v AC DC.
Rated insulation voltage 2.5kV.
Rated impulse withstand voltage 6kV.
Rated cross section 16mm²
Rated connecting capacity (mm²) 6, 10, 16
Rated current 74A with 16mm² stranded
cable, and 55A with 10sqmm stranded cable.

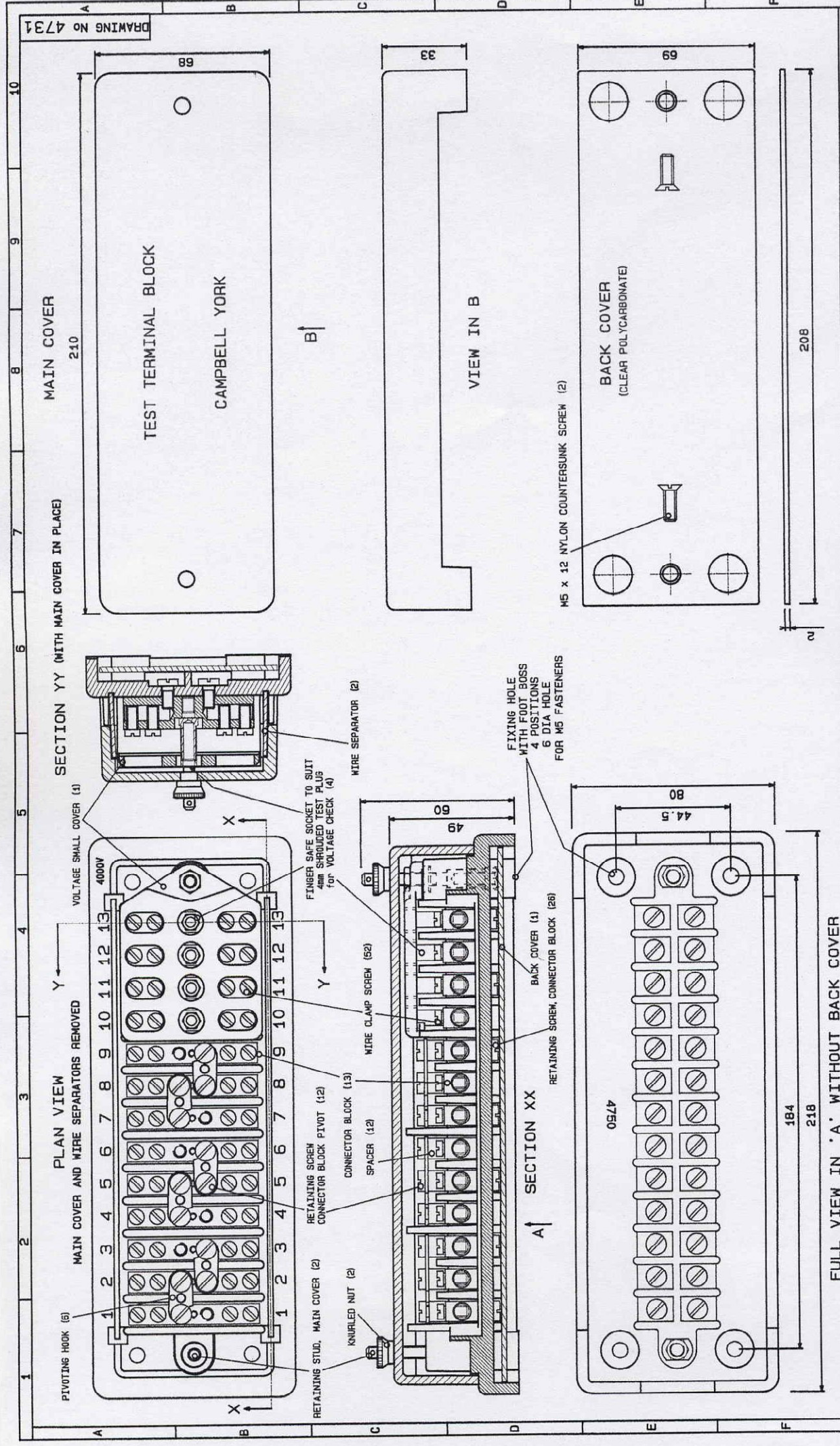
Four of 4mm Safety sockets for use
with single pole 4mm plugs with fixed
or retractable shrouds.



This front connected Test Terminal
Block (TTBFC) is available with a
clear front cover moulded in
polycarbonate.

The TTBFC stock number is 22983
and drawing number 4731A.

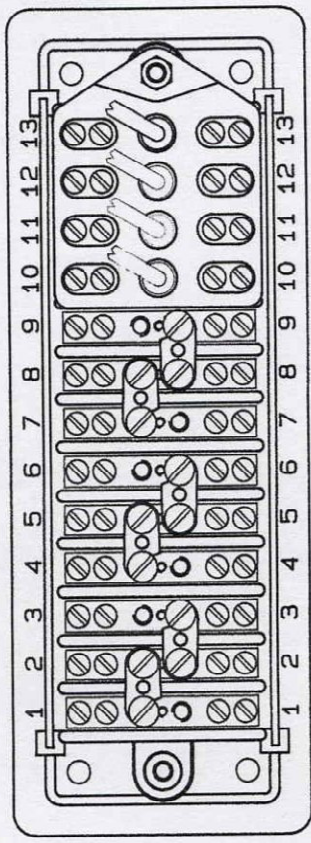
The write-on label is not supplied.
All other features remain the same.



FULL VIEW IN 'A' WITHOUT BACK COVER

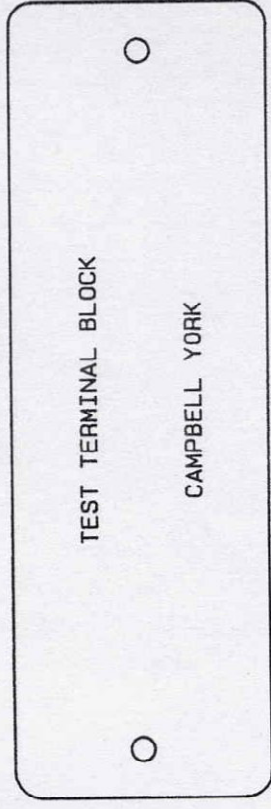
FINISH ALL MOLDINGS TO BE SMOOTH AND HIGHLY POLISHED		STOCK No 25986		USED ON DWG No		DIMTS IN mm A2: 594x420	
MATL VOLTAGE SHALL COVER - 30% GLASS FILLED BLACK NYLON, 4mm SOCKET INSULATION - BLACK NYLON		ENG/JOB		DRAWN/APPROVED SCALE		DATE	
MAIN HOUSING & MAIN COVER - BLACK BAKELITE, BACK COVER CLEAR POLYCARBONATE		OMEN BROTHERS		JH/RJW FS		150499	
DESCRIPTION		NEW PHOENIX WORKS		COPYRIGHT © OMEN BROTHERS		SHEET	
1	ORIGINAL	GLEN TRADING ESTATE		DRAWING No 4731		10	
2	WIRE CLAMP & CONNECTOR BLOCK FIXING SCREW CTRS REVISED	WELLYHOLE STREET		FRONT CONNECTED		9	
3	ADDITIONAL NOTE ABOUT FIXING HOLE & FOOT BOSS	OLDHAM OL4 3BF ENGLAND		TEST TERMINAL BLOCK		8	
		TELEPHONE & FAX 0161 624 6211		with 4mm SAFETY SOCKETS		7	
				TITLE		6	

PLAN VIEW
MAIN COVER AND WIRE SEPARATORS REMOVED

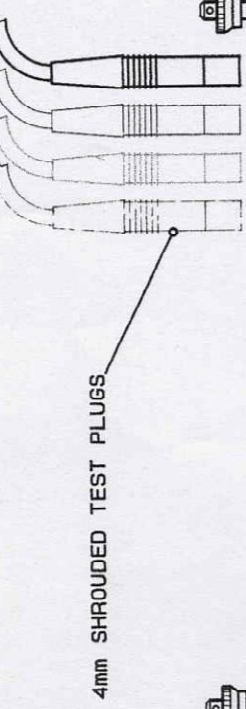


A↑

MAIN COVER

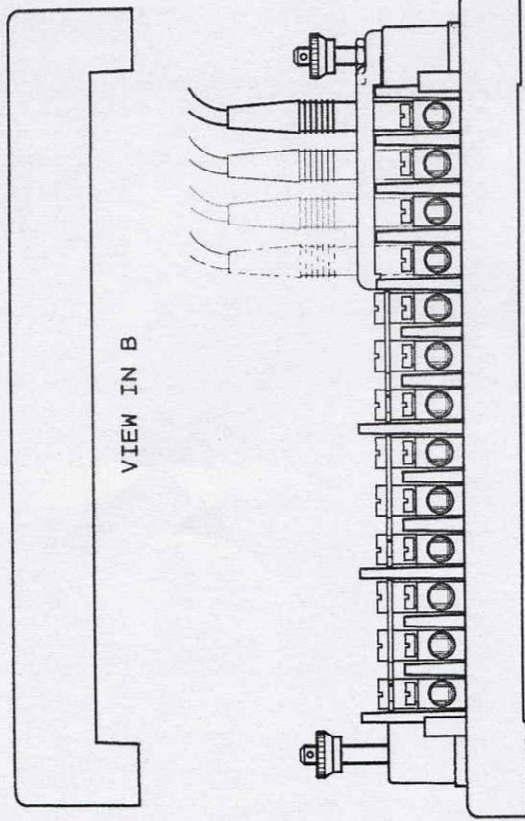


B↑



4mm SHROUDED TEST PLUGS

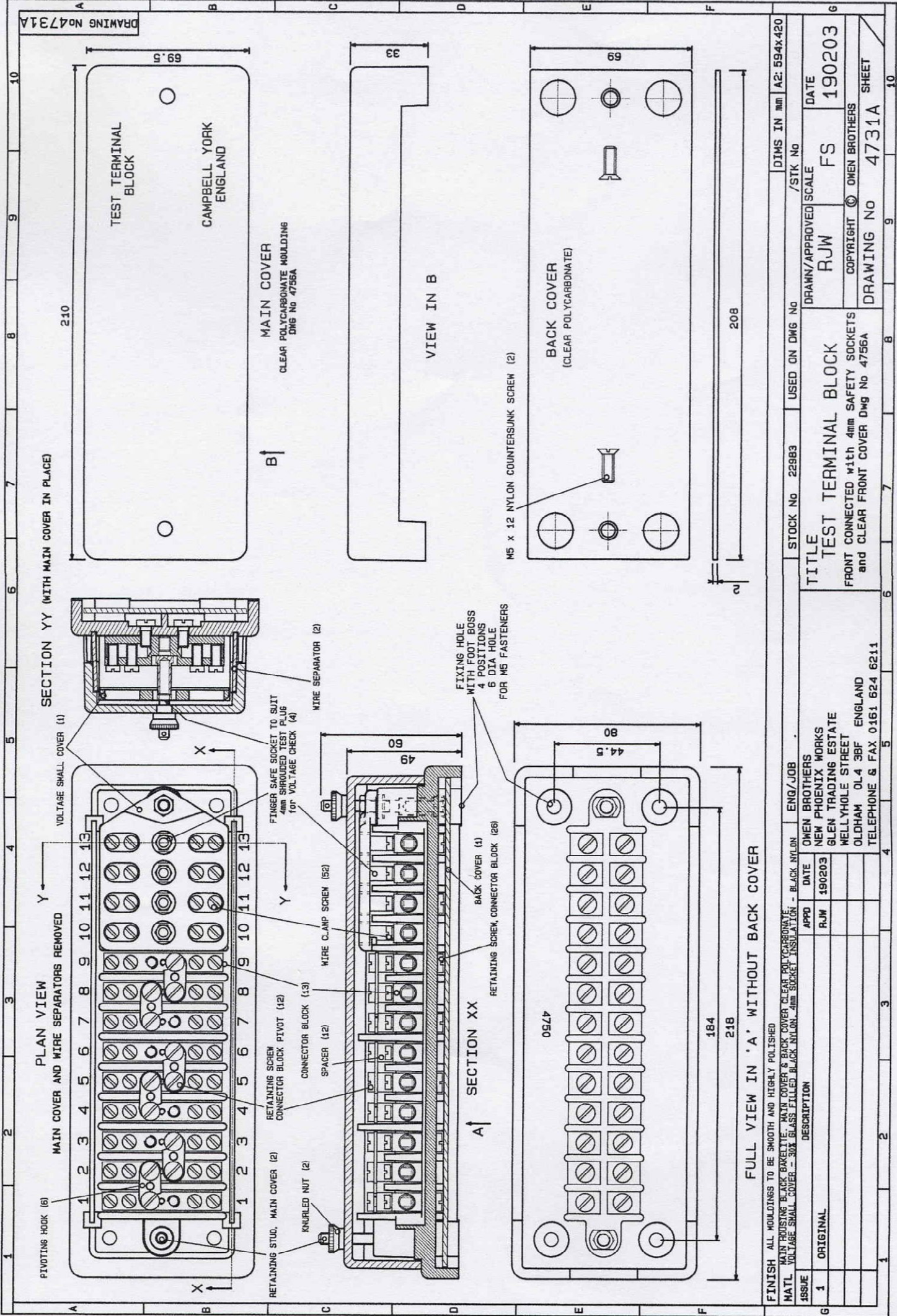
VIEW IN B



VIEW IN A
WITH 4mm SAFETY TEST PLUGS INSERTED

VIEW IN A
WITH 4mm SAFETY TEST PLUGS REMOVED

FINISH		BLACK BAKELITE, NICKEL PLATED BRASS FITTINGS		ENG/JOB		OMEN BROTHERS		STOCK No .22988		USED ON DMG No		/STK No		DIMS IN mm		A2: 594x420	
MATERIAL		DESCRIPTION		DATE		APPROVED		DRAWN/APPROVED		SCALE		DATE		DRAWING No		SHEET	
1		ORIGINAL		160499		JH/RJW		FS				160499		4732		9	
2		VIEW OF TTB BACK & VIEW OF BACK COVER ADDED		260900		RJM/RJM		TEST TERMINAL BLOCK FRONT CONNECTED with 4mm SAFETY SOCKETS		COPYRIGHT © OMEN BROTHERS		DRAWING No		4732		10	
								TITLE		TEST TERMINAL BLOCK FRONT CONNECTED with 4mm SAFETY SOCKETS		DRAWING No		4732		10	
								GLEN TRADING ESTATE WELLYHOLE STREET OLOHAM OL4 3BF ENGLAND		TELEPHONE & FAX 0161 624 6211							



FINISH ALL MOLDINGS TO BE SMOOTH AND HIGHLY POLISHED		STOCK NO 22983		USED ON DWG NO		DIMENSIONS IN mm / A2: 594x420	
MATERIAL: MAIN HOUSING BLACK BAKELITE; MAIN COVER & BACK COVER CLEAR POLYCARBONATE; VOLTAGE SMALL COVER - 30% GLASS FIBRE REINFORCED BLACK NYLON; 4mm SOCKET INSULATION - BLACK NYLON		ENG/JOB		DRAWN/APPROVED SCALE		DATE	
DESCRIPTION		OMEN BROTHERS		RJW		FS	
1 ORIGINAL		NEW PHOENIX WORKS		RJW		190203	
		GLEN TRADING ESTATE		COPYRIGHT © OMEN BROTHERS		DRAWING NO 4731A	
		WELLYHOLE STREET		DRAWING NO 4731A		SHEET	
		OLDHAM OL4 3BF ENGLAND					
		TELEPHONE & FAX 0161 624 6211					

FULL VIEW IN 'A' WITHOUT BACK COVER

SECTION YY (WITH MAIN COVER IN PLACE)

VIEW IN B

SECTION XX

PLAN VIEW AND WIRE SEPARATORS REMOVED

BACK COVER (CLEAR POLYCARBONATE)

MAIN COVER (CLEAR POLYCARBONATE Moulding Dwg No 4755A)

TEST TERMINAL BLOCK

FRONT CONNECTED WITH 4mm SAFETY SOCKETS and CLEAR FRONT COVER Dwg No 4756A

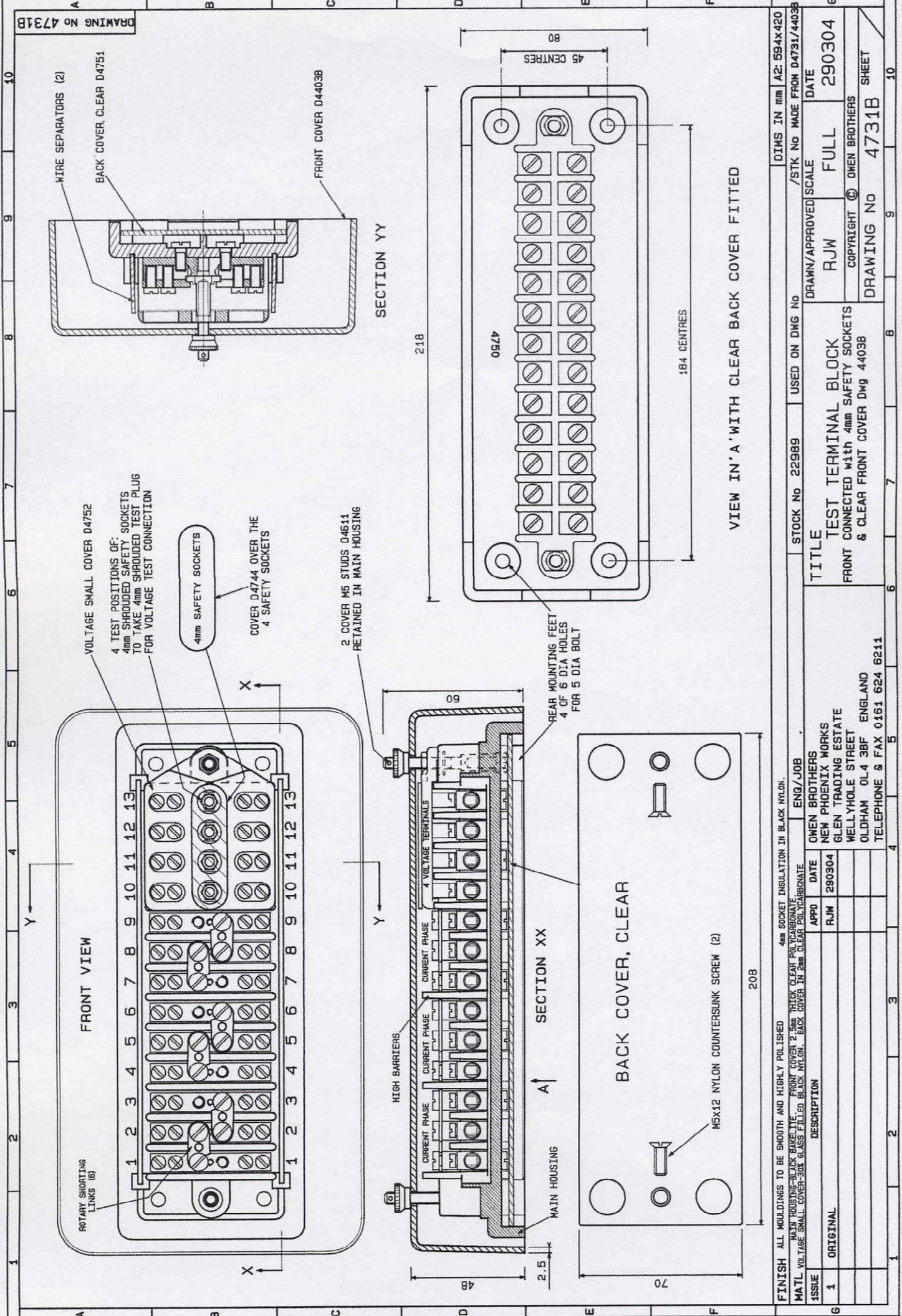
TEST TERMINAL BLOCK

DATE

SCALE

DRAWN/APPROVED

DIMS IN mm / A2: 594x420



DRAWING No 4731B

DIMENSIONS IN mm		A2: 594x420	
STOCK No 22989		USED ON DWG No	
DRAWN/APPROVED SCALE		/STK No MADE FROM D4731/4403B	
DATE		DATE	
RJW		FULL	
290304		290304	
COPYRIGHT © OMEN BROTHERS		DRAWING No 4731B	
DRAWING No 4731B		SHEET 10	
TITLE			
TEST TERMINAL BLOCK			
FRONT CONNECTED WITH 4mm SAFETY SOCKETS & CLEAR FRONT COVER DWG 4403B			
ENB/JOB			
OMEN BROTHERS			
NEW PHOENIX WORKS			
GLEN TRADING ESTATE			
WELLYHOLE STREET			
OLDHAM OL4 3BF ENGLAND			
TELEPHONE & FAX 0161 624 6211			
FINISH ALL MOULDINGS TO BE SMOOTH AND HIGHLY POLISHED			
4mm SOCKET INSULATION IN BLACK NYLON.			
MAIN HOUSING-BLACK BAKELITE. FRONT COVER 2mm THICK CLEAR POLYCARBONATE.			
MATERIAL VOLTAGE SMALL COVER-30X GLASS FILLED BLACK NYLON. BACK COVER IN 2mm CLEAR POLYCARBONATE.			
ISSUE	DESCRIPTION	APPD	DATE
1	ORIGINAL	RJW	290304

USER BENEFITS of TEST TERMINAL BLOCKS c/w 4mm safety test sockets

- 1) Accidental finger contact with the voltage terminals is significantly reduced by a well raised terminal cover making finger contact difficult.
- 2) Four 4mm insulated sockets are fitted to terminals 10 to 13, usually used for the three phase voltage and one neutral connection.
The 4mm sockets make safe the connection of voltage test leads with 4mm plugs that have either fixed shrouds, spring-loaded shrouds or bare 4mm plug ends.
- 3) Barriers are well raised between the voltage terminals to avoid accidental shorting and tracking.
- 4) Barriers are well raised between current phases (3 terminals & 2 links per current phase) to avoid accidental shorting and tracking.
- 5) The retaining screws holding the main cover are threaded machined studs. The studs are held in the terminal block housing with a nylon washer and will not rotate or withdraw either way. The retaining screw and associated knurled nut have holes for sealing wire.
- 6) The base moulding has feet moulded under the four mounting holes to prevent cracking of the bakelite plastic if the TTB is over-tightened onto a surface.
- 7) The main cover is robust having moulded-in ribs on the inside of the cover. Alternative test terminal blocks with a full polycarbonate clear cover are available.
- 8) At the rear of the test block the separation barriers are large between adjacent retaining screw heads.
- 9) The terminals have easily visible large number references 1 to 13 on the outside top and bottom
- 10) At the rear of the **front** connected test terminal block there is a clear polycarbonate cover to screen -off the screw heads thus preventing operator contact with any live screws.
- 11) At the rear of the **back** connected test terminal block, a Safety Cover (stk no 23009) in clear polycarbonate can be fitted to prevent finger contact with terminals whilst allowing the wires to exit. The Safety cover shares the same four mounting holes and screws (use M5 x 35 length on 3mm thick panel) with the test terminal block fitted.
- 12) The test block base and cover are made of bakelite, and the other plastic items are flame retardant nylon. Metal parts are brass nickel plated.

TECHNICAL DATA for TEST TERMINAL BLOCKS c/w 4mm safety test sockets

Front connected type with:

standard black cover ;	stock no 22988 dwg no 4731
clear cover 210 L x 70 W x 33 D	stock no 22983 dwg no 4731A
full clear cover 231 L x 130 W x 48 D	stock no 22989 dwg no 4731B

Back connected type with :

standard black cover	stock no 22984 dwg no 4735
clear cover 210 L x 70 W x 33 D	stock no 22985 dwg no 4735A
standard black cover with...	stock no 22986 dwg no 4735B
	Stock no 22980 dwg no 4745

....13 rear short studs each 32mm length

Technical Data

Maximum Current on non-socket terminals	74A with 16mm ² stranded cable @ 50C 55A with 10mm ² stranded cable @ 50C
Maximum Current on socket terminals	40A @ 50C
Current rating of 4mm insulated sockets	10A
Working Voltage	415V AC
Flash Test Voltage	2.5kV AC
Number of 4mm insulated sockets	4
Disposition of 4mm insulated sockets	On terminals 10 to 13
Number of Current Terminals per Block	9
Number of Neutral Terminals per Block	1
Number of Voltage Terminals per Block	3
Number of pivoted shorting links per block	6
Number of links per current phase	2
Current Terminal Hole Diameter	6mm
Voltage Terminal Hole Diameter	6mm
Number of pinch screws per hole	2 (4 per block)
Pinch Screws	2BA
Cover retaining screw & knurled nut	M5
Cover & base mouldings material	Thermosetting Bakelite, black
Other plastic parts	Glass reinforced nylon, flame retardant, black
Terminals and links	Brass, bright nickel plated
Mounting holes with moulded feet	Four at 5mm diameter
Weight	About 1 kg
Panel cut-out size for back connected	171 x 39
Mounting holes for front & back connected	184 x 45 centres
Mounting hole	4 holes each 6mm diameter.

The test terminal block fully complies with BS EN 60947-7-1:2002, "Low Voltage switchgear and controlgear, Part 7-1: Ancillary equipment—Terminal Blocks for copper conductors"