

OB737CT-IP66

Three Phase Metering Kit



VIEW & BUY
ONLINE



OB737CT-IP66

Three Phase Metering Kit

DATASHEET

- 1 Product Overview
- 2 Specifications
- 3 Declaration of Conformity
- 4 Technical Support



1 PRODUCT OVERVIEW

Designed for quick, hassle-free installation, our three phase metering kit is perfect for retrofit projects. The compact IP66-rated polycarbonate enclosure features multiple top and bottom knock-outs for flexible cable entry. Each kit comes pre-wired with voltage reference connection fuse carriers, ready to go out of the box.

Split Core Current transformers are available with 24mm which support loads from 100A to 200A, and 36mm which support loads from 300A to 600A so you can select the right fit for your application.

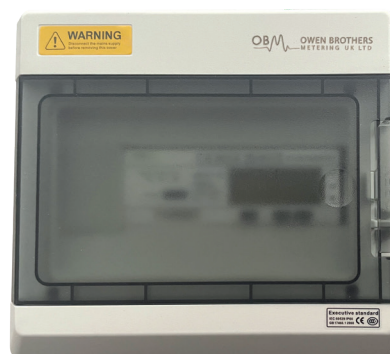
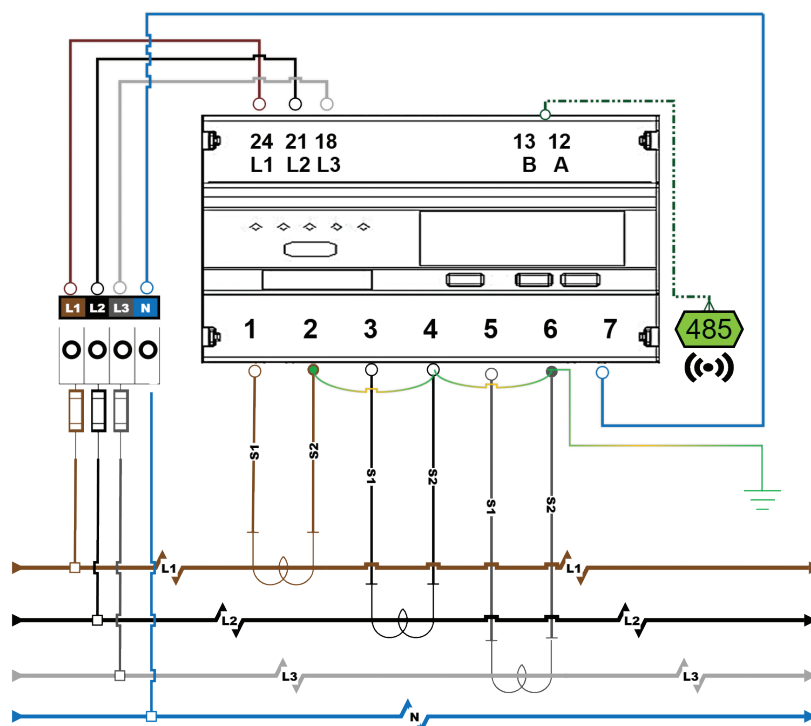
INCLUDED IN THE KIT:

- 1x 3 Phase OB737CT MID Certified Meter
- 1x 9 Way IP66 polycarbonate enclosure with frosted window and blanking plates to suit
Dimensions: 22w x 20h x 10d cm
- 4x Voltage reference fuse carrier, pre wired with fuses and spares
- 3x Split Core Current Transformers
(from 100/5 Amp up to 600/5 Amp as standard, higher amperage CT's available on request)

2 SPECIFICATION

Meter:	OB737 CT
Certification:	MID Certified
Type:	Three-phase CT operated, high-precision kWh meter. Class .1 accuracy with RS485 MODBUS RTU: baud rate, modbus ID, parity, Bi-directional, import/export, instant volt, amp, power factor, frequency, active power, reactive power, apparent power, industrial control, AMR compatible. Memory Backup. Meter displays if power fails, TOU, up to four tariffs, summertime switch
Housing:	7 DIN module case
Usage:	Suitable for industrial/commercial sub-billing, FIT/ROC, renewables, solar PV
Current Rating:	100A + programmable CT ratio
Voltage:	230V AC 50/60Hz
Pulse Rate:	320 imp/kWh @ 100/5
Output:	Isolated pulsed output and IR
Display:	LCD backlit display, voltage, ampere, kW, PF, Hz, + kWh, -kWh, total kWh

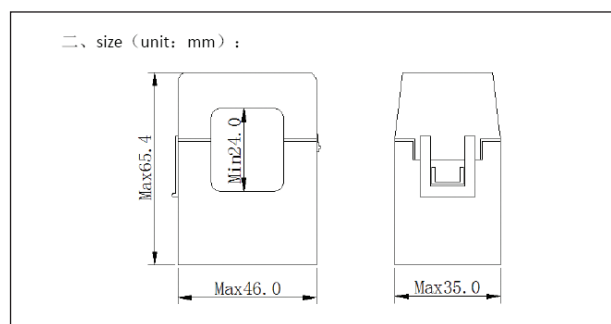
2 SPECIFICATION (Continued)



2 SPECIFICATION (Continued)

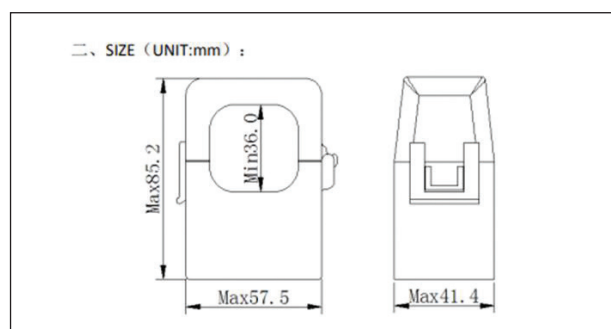
OBCT-T24 CTS ARE COMPACT HIGH QUALITY, HIGH ACCURACY, CLASS 1SPLIT-CORE CURRENT TRANSFORMERS.

The diameter of the inner hole is 24 mm, 1m Lead (2.5mm wire). Easy to install, simply clip around cables, indicator arrows embossed on the inside of the CT. Available in 100/5 & 200/5 Amperage.



OBCT-T36 CTS ARE COMPACT HIGH QUALITY, HIGH ACCURACY, CLASS 1 SPLIT-CORE CURRENT TRANSFORMERS.

The diameter of the inner hole is 36 mm, 1m lead (2.5mm wire.) Easy to install, simply clip around cables, indicator arrows embossed on the inside of the CT. Available in 300/5, 400/5 & 600/5 Amperage



OTHER TYPES OF CURRENT TRANSFORMERS AVAILABLE:

- Solid core
- Busbar
- Large amperage
- Summation CTs

3 DECLARATION OF CONFORMITY

We, Owen Brothers Metering UK Ltd. Ensure and declare that apparatus:

Single phase multi-function energy meter:
OB737CT.

EU Notified Body 0598
UK Notified Body 0120

Satisfy the appropriate requirements of the directive 2014/32/EU with the following standards:
EN 50470-1: 2006, electricity metering equipment (AC) part 1: General requirements, tests and test conditions. Metering equipment (class indexes A, B and C) and EN 50470-3: 2006, electricity metering equipment (AC) part 3: Particular requirements - static meters for active energy (class indexes A, B and C).

4 TECHNICAL SUPPORT

Technical Support/Sales:

Tel: +00 44 1616246211

Email: SUPPORT: support@owen-brothers.com
SALES: sales@owen-brothers.com

www.owen-brothers.com

