

## Split Core Current Transformer S24 Series

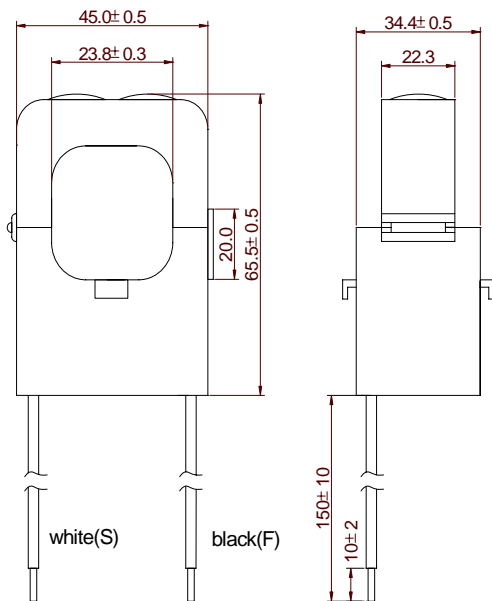
The S24 Series are split-core current transformers. The CT can be mounted to existing panels, such as control centers or load centers, to measure or monitor wattage. These CTs can be mounted without removing existing cables for easier installation



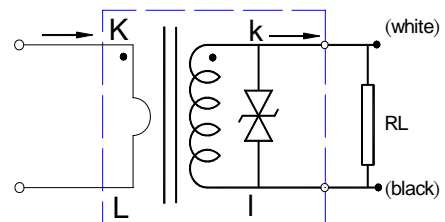
### STANDARD PART NUMBERS

MODEL	INPUT CURRENT	AVAILABLE OUTPUT
S24-100	100 A	CURRENT OUTPUTS @ 20mA, 33.3mA, 40mA, 50mA, 100mA, 1A, 5A VOLTAGE OUTPUTS @ 0.25V, 0.33V, 0.5V, 1V, 2V
S24-150	150 A	
S24-200	200 A	
S24-250	250 A	
S24-300	300 A	

### DIMENSIONS( MM )



### CONNECTION DIAGRAM



note:

1. Primary current direction from K to L
2. Secondary current directions from k to l (lead wire from white to black)
3. RL: Output load resistance

### APPLICATION

- Current Measurement
- Electrical load monitoring
- Energy and sub-metering products
- Network equipment
- Instruments and sensors
- Control systems
- Go GREEN initiatives

### SPECIFICATIONS

- Standard Input Current 5-300A
- Frequency 50Hz — 400Hz
- Custom design Turns-Ratio available
- Standard accuracy 0.5
- Approximate weight 180g
- Clamping voltage on selected models
  - ANSI C57.13 and C12.20 Standards

### CAUTION

Before installation, safety precautions must be followed by a licensed professional. Never energize primary unless terminals short circuited or burden connected to secondary.